



Education Newsletter

October 2024 - Issue 10

In This Edition

New Design

We're bringing you an all new newsletter format!

Chapter Events

Hosting a chapter event soon?
Submit them for CE credits!

ASHI Edge

We have a new course coming your way soon on electrical inspection.

The ASHI School

Continue growing your business with our latest courses.

InspectionWorld

Just announced! Northern Illinois will be our next host chapter!

State Specific Updates

New state approved credits and licensing reminders.

ASHI EDGE
ALWAYS YOUR BEST OPTION

REGISTER NOW >

LIVE WEBINAR

How Mold Testing Can Elevate Your Business: Value for Clients, Revenue for You

October 17, 5:00 PM CT
FREE for ASHI members
\$29 for non-members

Free Member Webinar

We'll explore how mold testing can enhance your business and increase client satisfaction.

- Learn how to price and market your services effectively
- Discover the best tools for mold testing
- Understand the key benefits for your clients.

[Register for the Webinar](#)

Chapter Events

Have Your Event Featured Here!

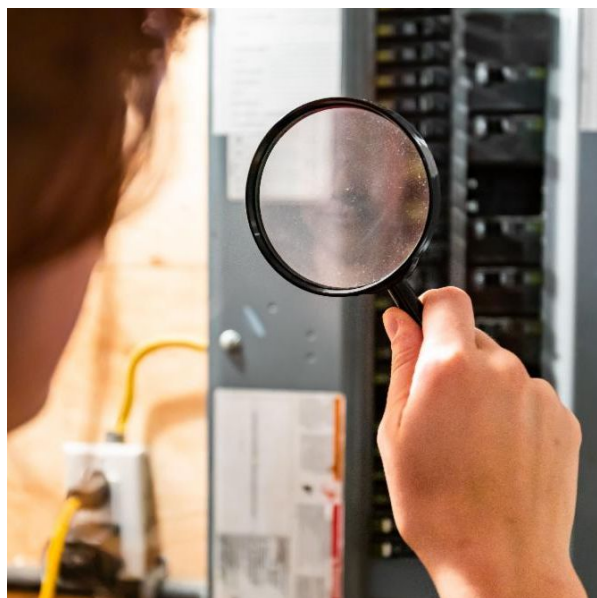
Have a chapter education event you would like promoted on the ASHI Education Newsletter submit your event here, not only will you confirm ASHI CE Credits but we use this information to post chapter events on the newsletter!

We can't wait to share all of the wonderful things your chapters are doing!

**IMPORTANT
ANNOUNCEMENT**

[Submit Your Courses and Events](#)

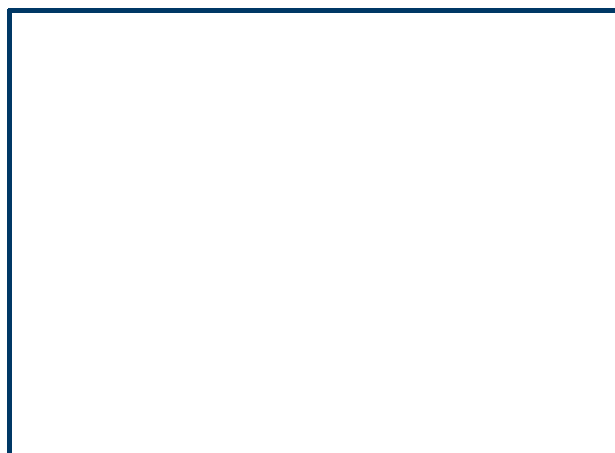
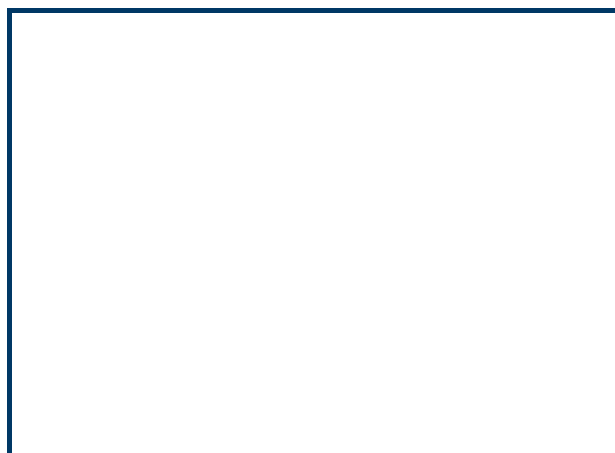
ASHI Edge



ASHI Electrical Inspection Course - Coming Soon!

This self-paced online course provides an in-depth exploration of electrical systems. It is designed specifically for home inspectors who are interested in mastering electrical concepts and systems. The course covers fundamental concepts such as electricity basics, Ohm's and Watt's laws, electrical circuits, grounding and bonding, and electrical safety. It also delves into advanced topics like electrical distribution, load calculations, alternative energy systems, and compliance with electrical codes and standards.

The ASHI School





Coming Soon: Code is Not a Four Letter Word

Presented by Bruce Barker, author of Everybody's Building Code, **this new course teaches you the basics of building codes.** Code is not a land mine that home inspectors need to avoid. It is a resource that can help you identify and report real defects, and avoid reporting defects that are actually not defective.

Earn 4 ASHI CE Credits, 4 ICC Credits and up to 4 State Credits.

[Learn More](#)



Commercial Inspection Class

Join us November 6 - 8 to unlock the **potential of commercial inspections** and take your home inspection business to new heights. Our comprehensive class is designed to equip you with the knowledge, skills, and insights needed to confidently enter the commercial inspection market.

Earn 22 ASHI CE Credits, 10 HIA Membership Education Credits, and 20 CREIA CE Credits.

[Register Today](#)

InspectionWorld on the Road



We are proud to announce that the next InspectionWorld on the Road host will be the Northern Illinois Chapter! Make sure to join us in June for the latest gathering of our nation's home inspectors. Final dates and registration links will be provided closer to the event, but in the meantime, check out our recently hosted events!

[Check Out Past Events](#)

State Specific Updates

Alaska Members

The state of Alaska recently approved four of ASHI's Interactive courses! All four courses are FREE for members. Earn up to 13 ASHI CE Credits and up to 14 Alaska CE Credits.

- Inspecting Drain, Waste and Vent Systems
- Plumbing: Water Conditioning, Recirculation, and Movement; Fuel Storage and Piping
- Inspecting Roofs: Correct Installations and Associated Defects
- Plumbing: Water Service & Distribution Systems, Fixtures, and Backflow Prevention

[Earn Your Fee Alaska CE Credits](#)

Illinois Members

The 2024 renewal deadline for your Home Inspector and Home Inspector Entity Licenses is November 30, 2024. You have 45 days to get your documentation in! Not sure what you need to get your renewal in on time? **Check Page 8 of the latest Division of Real Estate Review: IDFPR Quarterly Newsletter.**

[Renew Your Illinois License](#)

IL, FL, & NC Members

Have you completed a state-approved course recent on ASHI Edge? Make sure to fill our the State CE Submission form so we can submit your CE Credits to the state!

[Submit Your CE Credits](#)



ASHI | Regency Towers 1415 West 22nd St. Tower Floor | Oak Brook, IL 60523 US

[Unsubscribe](#) | [Update Profile](#) | [Constant Contact Data Notice](#)



Try email marketing for free today!